

High Density Cabling Solution

Luxglo HD Panel



1U/144F LC / 72F SC
1U/288F MDC (2ports adapter)



2U/288F LC / 144F SC
2U/576F MDC (2ports adapter)



4U/576F LC / 288F SC
4U/1152F MDC (2ports adapter))

MDC (3port adapter) – support 1U/432F , 2U/864F , 4U/1724F connection - special custom order required

Luxglo high density unique design patch panel, with maximum LC connecting & cabling, adopt the high-strength environmental light weight material and superior surface treatment technique, which make the panel achieved complete function and various flexible cabling solution.

Composition:

- Aluminum or cold rolled steel patch panel
- Plug-in cassette module with self-lock institutes
- Fibre adapter
- MPO/MTP and MDC trunk cable
- MPO-LC / MDC fan out or LC / SC / MDC trunk patch cord

Features

Super Density Cabling

- 1U/288F MDC / 144F LC / 72F SC
- 2U/576F MDC / 288F LC / 144F SC
- 4U/1152F MDC / 576F LC / 288F SC

Easy Operation

- Standard 19" Patch Panel
- Environmental light weight Aluminum material
- Independent plug-in cassette
- Front-end cable management
- Stable adapter structure

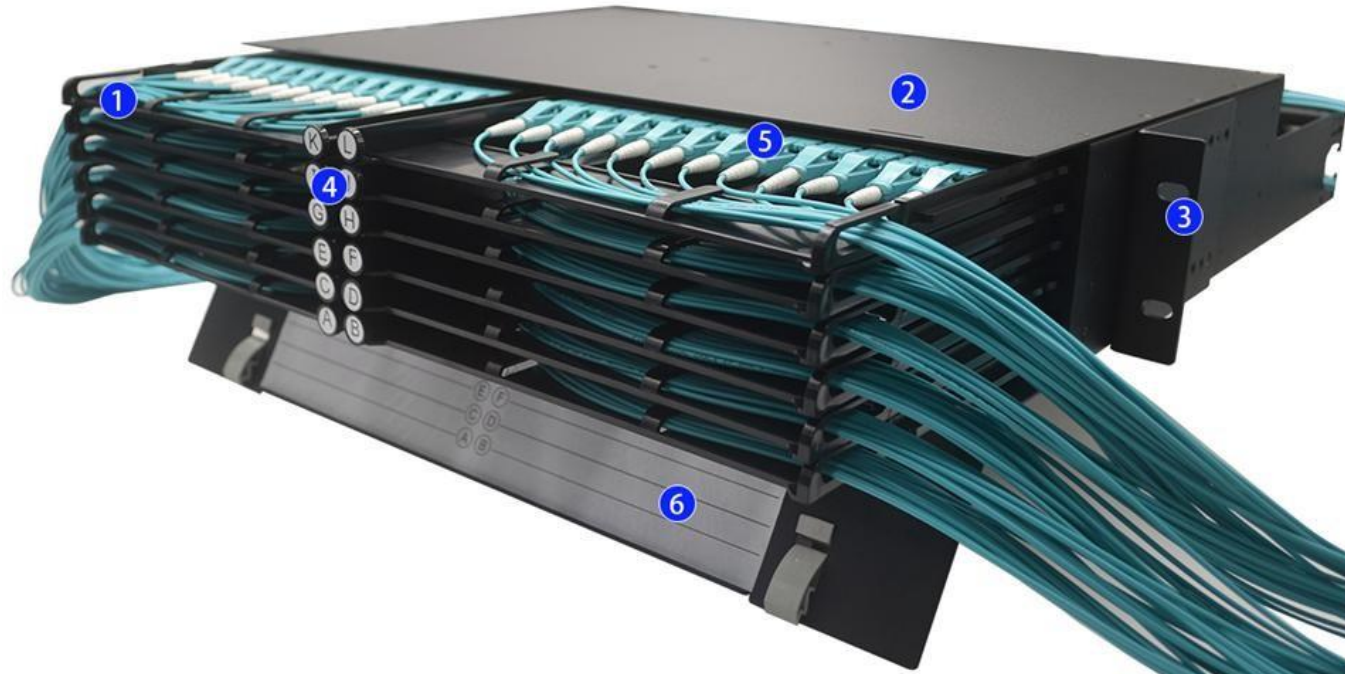
Various Flexible Cabling

- Compatible with 8F&12F solution
- Replaceable label and layer remark
- Duplex and Quad adapter available
- Various connectors are optional
- MPO-LC fan out and LC/SC trunk cable
- Multi-applications in Data centre and FTTX

Specification

ITEMS	1U ODF	2U ODF	4U ODF
Dimension	435x460x44mm	435x460x88mm	435x460x176mm
Weight (contain cassette)	3.7 kg	6.4 kg	11.2kg
Packing box	539x366x94mm	539x366x139mm	539x336x226mm
Cassette QTY	6Pcs	12Pcs	24Pcs
Capacity	MDC 288F / LC 144F / SC 72F	MDC 576F / LC 288F / SC 144F	MDC 1152F / LC 576F / SC 288F
Operating Temperature	-20°C ~ +60°C		
Patch cord Category	MPO/MTP-LC/SC/MDC Fan out or LC/SC/MDC trunk patch cord		

Features



01 24F cassette module, suit for 3x8F / 2x12F / 1x24F LC and 4x12F MDC connection

02 Environmental light weight design (Aluminum) and anodized surface treatment guarantee the good quality

03 Side mounting bracket design achieve flexible adjustment

04 The smart self-lock institute design achieve easy inserting and pulling

05 The cassette compatible with LC duplex / SC Simplex / MPO figure SC / MDC 2 ports adapters

06 Pocket label convenient for independent label printing and replacement

Features



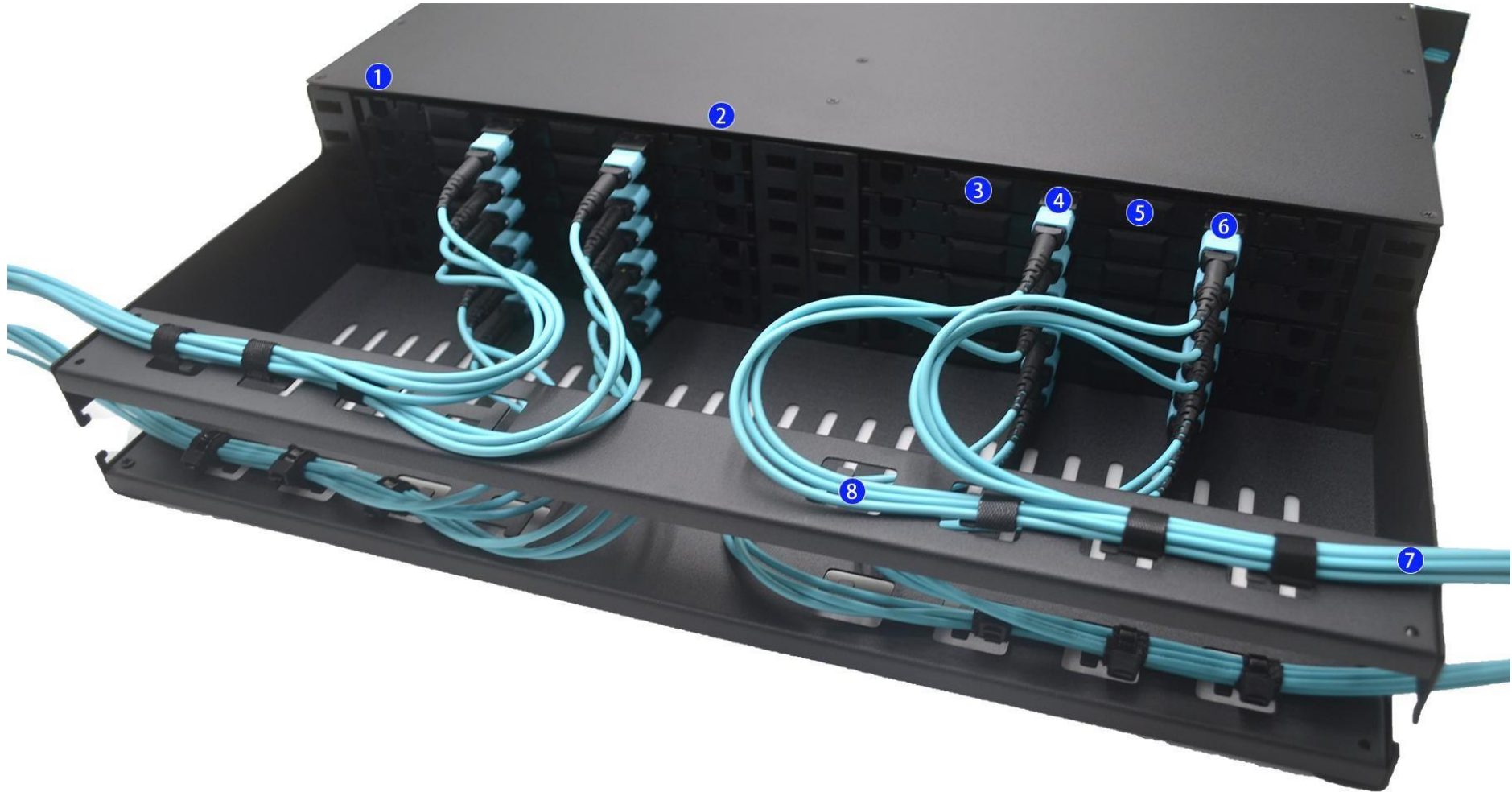
01 | Independent cassette for smart cable management

02 | Multi-Layer Cassette for easy separated operation

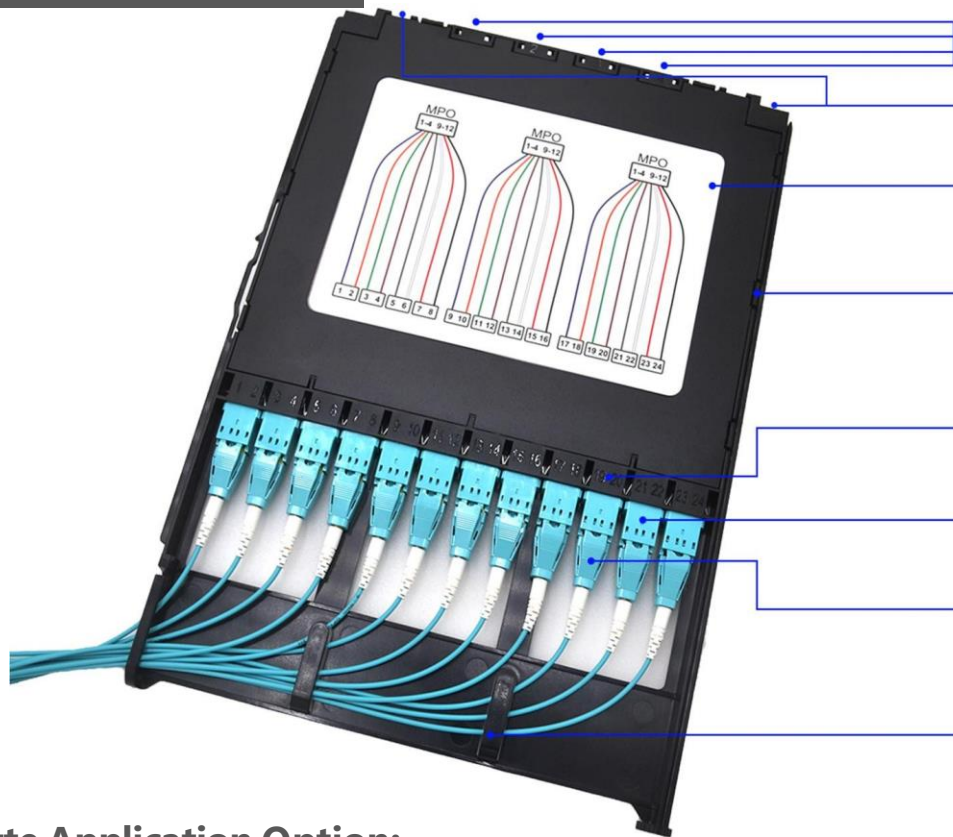
03 | Label corresponding with each cassette for clear identification
Open and close the cassettes by pushing the label keys

Features

- 01 Luxglo design with reserved space for cable in with 24F splicing connection.
- 02
- 03 Each cassette support 4
- 04 MPO/MTP adaptor, available
- 05 for 1x24, 2x12 and 3x8 LC
- 06 and 4x12 MDC solutions
- 07 Luxglo panel with independent
- 08 cable management frame to fix the trunk cable



Cassette Module



4 MPO interface for 8F / 12F / 24F MPO-LC and 4*12F MTP-MDC connection.

Press type lockers to lock and open cassettes easily

Label for clear observation

High-strength environmental plastic and manual clip design, ensure the easy Operation





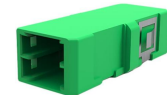




Adaptor labeling

Multi adaptor options (see below)

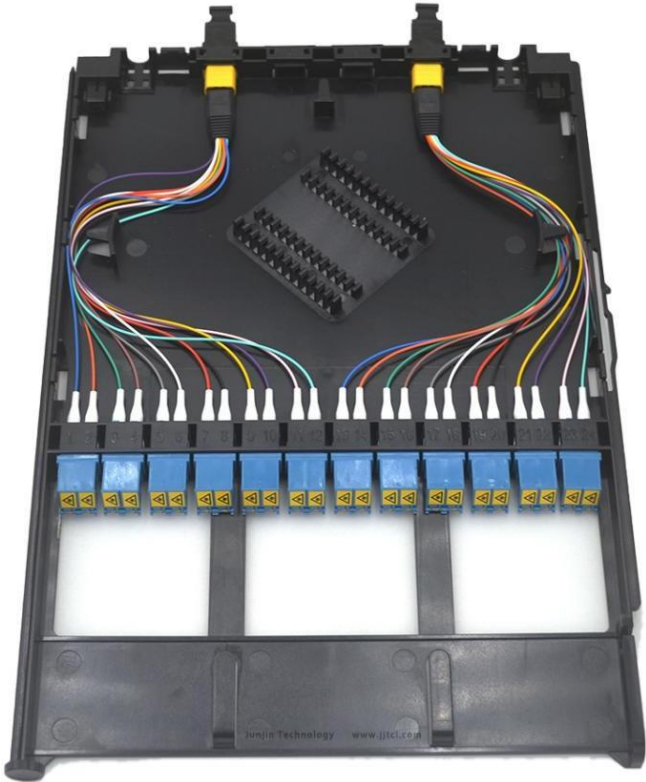
Multi connector options (see below)

Innovative design, prevent over bending

Cassette Application Option:

TYPE	CONNECTOR				FRONT ADAPTOR				
PICTURE									
NAME	LC Uniboot	Push-Pull Uniboot	Duplex LC	Simplex SC	MDC 2 ports adaptor	LC duplex Adaptor	LC inner shutter duplex adaptor	MPO adaptor	SC simplex adaptor

Cassette Module



2-MPO-12LC Connection



3-MPO-8LC Connection



1-MPO-24LC Connection

Cassette Module



3*1X8 PLC Connection



24 Splice connection

CONNECTOR

Unique LC Connector

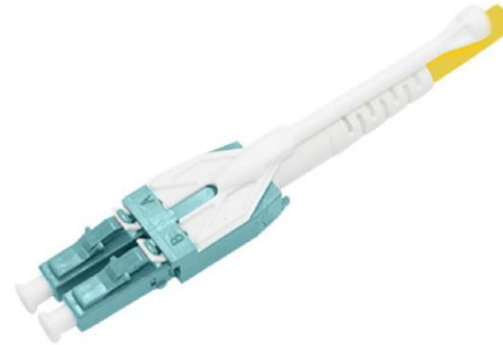
Luxglo provide the unique solution for high density cabling.

Our design with double capacity, better air flow, easier and simpler cable management



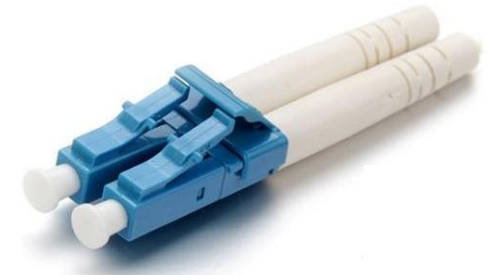
Standard Uniboot

- Super easy polarity revise
- PC/APC, SM/MM & Multi-color options
- HD Application, same height as standard LC Adaptor
- Comply with IEC61754-20 and GR326
- Compact design perfect the cabling solution
- Suitable for HD Cassette
- UL94-V0 environmental material



Push-Pull Uniboot

- PC/APC, SM/MM & Multi-color options
- More high density solution
- Comply with IEC61754-20 and GR326
- Compact design perfect the cabling solution
- UL94-V0 environmental material
- Pull-Push Anti-intertwine Design



LC Duplex Connector

- Switchable Connector to change polarity;
- SM/MM, PC/APC available;
- A customized Logo is optional;
- IEC61754-20 and GR326 compliant;
- RoHS and UL94-V0 inflammability grade compliant;

ADAPTER

Unique LC Adapter

With the development of environmental protection and data transmission stability in Data Centre.

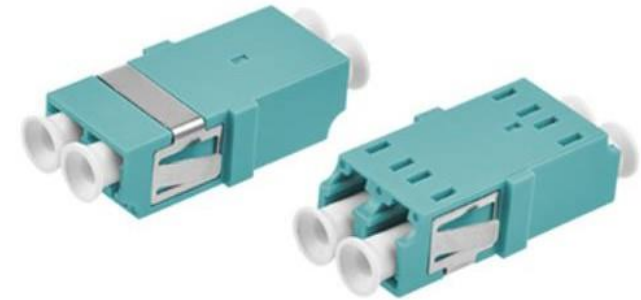
The "dust proof and light blocking" of adapter guarantee the safe operation and stable transmission.

Luxglo designs the unique inner shutter adapter to meet above requirement.



LC duplex inner shutter adapter

- Duplex and Quad options
- Well match with uniboot in Datacenter application
- Smart design to avoid ferrule contact shutter plate
- SM/MM& Multi-Color Options
- Patented stable metal clip design



LC duplex flangeless figure SC adapter

- Stable and regular metal clip options
- Perfect fit Luxglo cassette module
- IEC and Telcordia Standard Compliant
- UL94-V0 and RoHS environmental material

CONNECTOR & ADAPTER

MPO Connector and Adapter

MPO connector comes with multifibre applies to high density in data centre or telecommunication systems.

It depends on the high precision metal guide pin and the high precision ferrule pin hole to ensure the optical alignment.

It comes with SM, SM LL, MM, MM LL, 8F, 12F, 24F, regular force spring, high force spring for your choice.



MPO Push-Pull Connector

- 8 / 12 / 16 / 24 / 32F options
- SM/MM & Multi-Color Options
- Smart Push-pull tab design
- IEC 61754-7 and GR-1435 compliant
- RoHS and UL94-V0 inflammability complaint

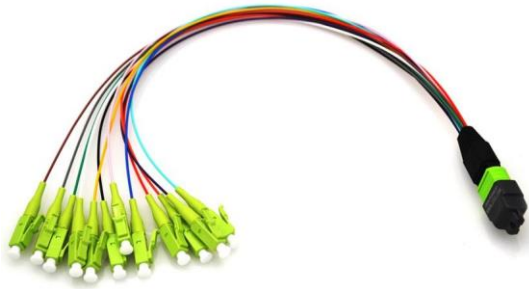


MPO Connector

- Stable metal clip for easy installation
- Available in several standard colors
- Available without flange
- UL94-V0 and RoHS environmental material

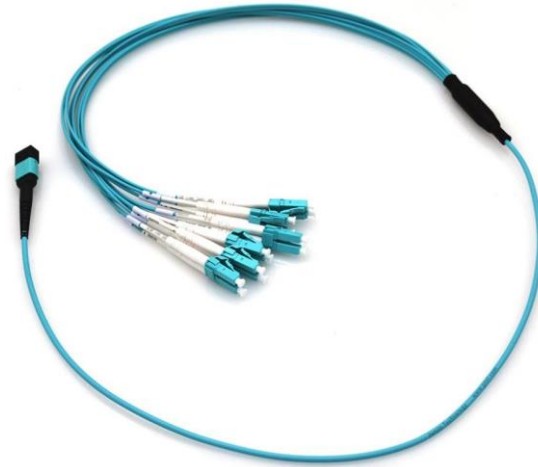
PATCH CORD

MTP/MPO Patch Cord



MPO/MTP – LC Short Fanout Patchcord

- MPO-LC/SC fan out 8F 12F 24 patch cord in cassette
- Length: 30cm
- Yellow, Green, Aqua, Erika violet etc MPO/LC housing colors are available
- Bare fiber & 0.9mm loose tube options



MPO/MTP – LC/SC Fanout Patchcord

- Standard MPO / MTP-LC / SC connection
- 8 & 12 & 24 cores available
- LC, Uniboot and SC connector options
- 2.0mm & 0.9mm loose tube options
- Complete solution support with 100% test
- All cable twined as per cassette

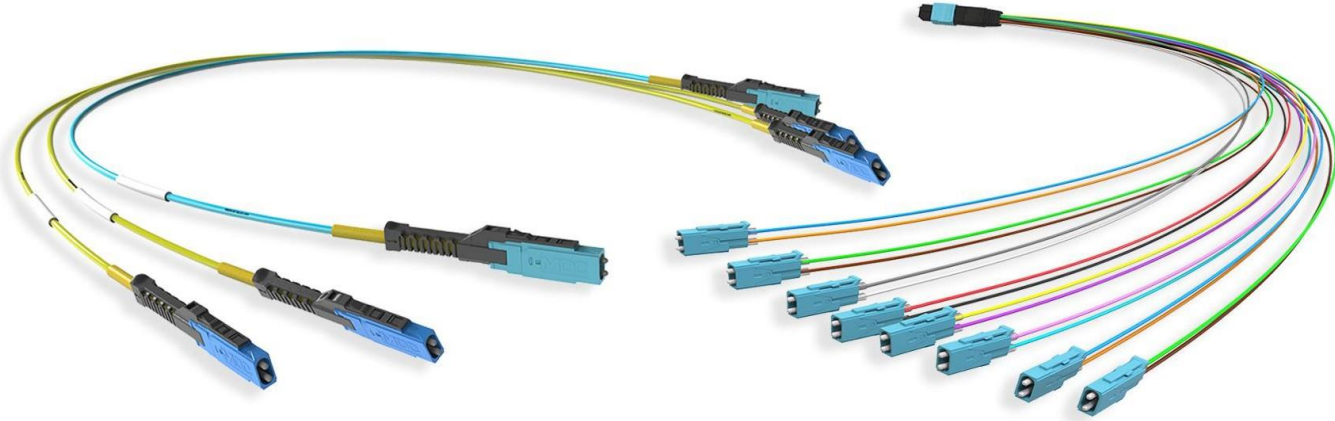


MPO/MTP - MPO/MTP Trunk Cable

- Customized trunk cable length
- 24F-288F termination are available
- Various colors available
- OFNR OFNP LSZH PE jacket are available
- Complete solution support with 100% test

PATCH CORD

MTP-MDC Patch cord



MDC trunk cable

MPO-MDC fanout cable in Cassette



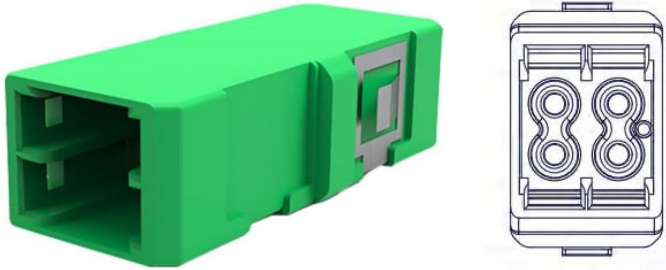
MPO-MDC hybrid trunk cable

MDC-MDC tab Patch Cable, US Conec MDC is a Very Small Form Factor (VSFF) duplex optical connector with proven 1.25mm ferrule technology while tripling times the fiber density over LC duplex connectors. The MDC duplex patch cables are mainly used in high-density applications and for cross-connection between patch panels or distribution boxes with products that contain optical fibers. (Special Order)

MTP to MDC hybrid trunk cable enables one QSFP-DD, QSFP28 or QSFP+ transceiver to be connected to MDC patch panels or cassettes. With MDC, the port density can be tripled compared to LC duplex per 19" height unit and thus decisively save space in the rack. (Special Order)

Basic Specifications SM/MM MTP/MPO Low Loss <0.35dB, MDC IL <0.3dB Operating Temperature :-10 to +70°C (14 to 158°F) (Special Order)

MDC Adapters



MDC 2 ports adapter



MDC 3 ports adapter

Luxglo's cassette can be installed with MDC 2ports and 3ports (**Cassette need special order**) as above to double and triple the capacity.

- High density up to 4 or 6 connections in one SC-shaped adapter
- Available in SC-Shape for easy implementation
- Easy to clean, with well-known tools
- MM, SM and SM APC available